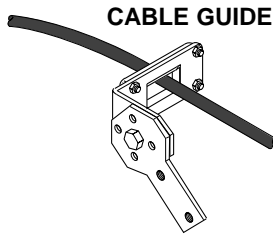


# Accessories

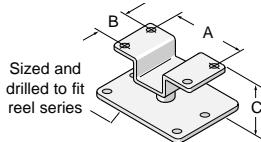


**CABLE GUIDE**

One guide standard on each reel. Additional units may be fastened to supports away from reel to guide long runs of cable. Heavy steel with four nylon rollers.

REEL SERIES	MODEL NO.	WINDOW W x H
C14	RG14	2.5(64) x 1.25(31)
C16	RG16	3.0(76) x 1.25(31)
C19	RG19	3.5(89) x 1.25(31)

**340° PIVOT BASE**  
(Optional)

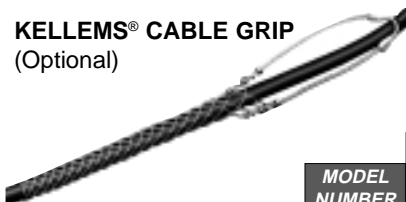


Sized and drilled to fit reel series

REEL SERIES	PIVOT BASE	HOLE DIA. in. mm	DIM. "A" in. mm	DIM. "B" in. mm	DIM. "C" in. mm
C14	#PB14	0.47 (11.9)	3.0 (76)	3.0 (76)	2.0 (51)
C16	#PB16	0.53 (13.5)	6.0 (152)	6.0 (152)	3.0 (76)
C19	#PB19	0.53 (13.5)	6.5 (165)	6.5 (165)	3.0 (76)

Aligns reel to the direction of cable run. Steel construction with orange polyester baked on finish. May be mounted with reel upright or hanging. Available for all models.

**KELLEMS® CABLE GRIP**  
(Optional)



Stocking-type support prevents excessive strain on cable or pullout at connection point. Also absorb additional strain caused by flexure, vibration, expansion and contraction.

MODEL NUMBER	FITS O.D.s BETWEEN in. (mm)
CG01	0.5 - 0.6 (12-15)
CG02	0.6 - 0.7 (16-18)
CG03	0.75 - 1.0 (19-25)
CG04	1.0 - 1.2 (25-31)



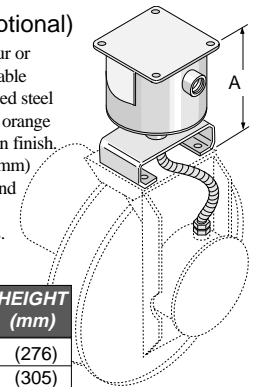
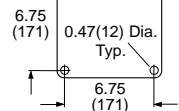
**CABLE STOP**

Adjustable cable stop clamps onto cable to keep desired length of cable outside cable guide. Used only in hand pull applications. Black, neoprene rubber. Loosened or tightened with a standard screw-driver.

MODEL NUMBER	FITS O.D.s BETWEEN in. (mm)
CP-0	.25 - .46 (6-12)
CP-1	.47 - .56 (12-14)
CP-2	.57 - .69 (14-18)
CP-3	.70 - 1.0 (18-25)

**360° SWIVEL BASE** (Optional)

Allows full 360° swivel for all three, four or eight conductor **C14** and **C16** electric cable reels. Weathertight. Rated 600v. Rugged steel construction with orange polyester baked on finish. Includes 18"(457mm) flexible conduit and leads. Net weight 25 lbs.



MODEL NUMBER	COND.	AMP.	O.A. HEIGHT in. (mm)
SB360-430	4	30	10.5 (276)
SB360-830	8	30	12.0 (305)
SB360-455	4	55	12.0 (305)

# Cable Data

## Type SO -600 VOLT

Refer to the National Electrical Code for ampere ratings and other details.

16 AWG.			14 AWG.			12 AWG.			10 AWG.		
NO. COND.	DIA. in. (mm)	WEIGHT/ft. lbs. (kg)	NO. COND.	DIA. in. (mm)	WEIGHT/ft. lbs. (kg)	NO. COND.	DIA. in. (mm)	WEIGHT/ft. lbs. (kg)	NO. COND.	DIA. in. (mm)	WEIGHT/ft. lbs. (kg)
2	0.374 (9)	0.094 (0.04)	2	0.512 (13)	0.158 (0.07)	2	0.586 (15)	0.204 (0.09)	2	0.638 (16)	0.250 (0.11)
3	0.393 (10)	0.110 (0.05)	3	0.538 (14)	0.184 (0.08)	3	0.616 (16)	0.244 (0.11)	3	0.671 (17)	0.310 (0.14)
4	0.427 (11)	0.144 (0.06)	4	0.584 (15)	0.224 (0.10)	4	0.668 (17)	0.282 (0.13)	4	0.730 (19)	0.371 (0.17)
5	0.510 (13)	0.156 (0.07)	5	0.665 (17)	0.160 (0.12)	5	0.725 (18)	0.322 (0.14)	5	0.796 (20)	0.425 (0.19)
6	0.565 (14)	0.178 (0.08)	6	0.710 (18)	0.302 (0.14)	6	0.805 (20)	0.380 (0.17)	6	0.883 (22)	0.485 (0.22)
7	0.605 (15)	0.202 (0.09)	7	0.710 (18)	0.329 (0.15)	7	0.865 (22)	0.435 (0.20)			
8	0.645 (16)	0.222 (0.10)	8	0.770 (20)	0.373 (0.17)	8	0.920 (23)	0.475 (0.21)			
9	0.720 (18)	0.268 (0.12)	9	0.820 (21)	0.414 (0.19)						
10	0.720 (18)	0.278 (0.13)	10	0.885 (22)	0.434 (0.20)						
12	0.740 (19)	0.305 (0.14)									

## Round Cable

### Type W 600 VOLT

8 AWG.			6 AWG.			4 AWG.		
NO. COND.	DIA. in. (mm)	WEIGHT/ft. lbs. (kg)	NO. COND.	DIA. in. (mm)	WEIGHT/ft. lbs. (kg)	NO. COND.	DIA. in. (mm)	WEIGHT/ft. lbs. (kg)
2	0.788 (20)	0.328 (0.15)	2	0.872 (22)	0.425 (0.19)	2	0.980 (25)	0.575 (0.26)
3	0.894 (23)	0.470 (0.21)	3	0.983 (25)	0.614 (0.28)	3	1.068 (27)	0.797 (0.36)
4	0.966 (25)	0.583 (0.26)	4	1.068 (27)	0.769 (0.35)	4	1.166 (30)	1.019 (0.46)



CM-5

We reserve the right to ship the most current designs.

Spec-Tech Industrial Electric - [www.spectechind.com](http://www.spectechind.com) - 888-773-2823